

IT/Knowledge Industry Policy - 2009

Government of Punjab

For latest updates please visit our website www.punjabinfotech.org



visit our website

www.punjabinfotech.org

Printed and Published by

Managing Director

Punjab Infotech

(A State Government Undertaking)

18, Himalaya Marg

Udyog Bhawan, 5th-6th Floor

Sector 17, Chandigarh- 160 017

Ph.: +91 172 3017299 - 300

Fax: +91 172-2701595

e-mail: info@punjabinfotech.org

Design & Printing

BUZZIMC

82, Industrial Area, Phase-1

Chandigarh - 160002

Phone : 93160 25653

e-mail : info@buzzimc.com

www.buzzimc.com

© Punjab Infotech 2010



IT/ Knowledge Industry Policy - 2009

Government of Punjab



GOVERNMENT OF PUNJAB
PUNJAB INFORMATION & COMMUNICATION TECHNOLOGY CORPORATION LIMITED
IT/Knowledge Industry Policy - 2009,
(Chapter 11 of Punjab's Industrial Policy 2009, Notification vide No. CC/NIP/2009/1547 dated : 7.10.2009)

Contents

Clause No.	Clause No. As Per Industrial Policy	Topics	Page No
1	11.1	Preamble	1
2	11.2	Vision	1
3	11.3	Mission	1
4	11.4	Objectives	2
5	11.5	Strategic Framework and Action Plan	2
6	11.6	Definitions	2
7	11.7	Exemption from Clearance from Punjab Pollution Control Board (PPCB)	3
8	11.8	Exemption from Inspection Under Various Labour Laws	3
9	11.9	Exemption from Punjab Apartment and Property Regulation Act (PAPRA)	4
10	11.10	Incentives in Respect of Electric Power	4
11	11.11	Provisions of VAT	4
12	11.12	Exemption from Stamp Duty and Registration fees	4
13	11.13	Permissible FAR	4
14	11.14	Exemption from Zoning Regulations & Conversion charges	5
15	11.15	Special Incentives for Mega Projects	6
16	11.16	Special Incentives for Small and Medium Enterprises (SMEs)	6
17	11.17	Incentive for Quality Certifications	6
18	11.18	Venture Fund for IT/Knowledge Industry	6
19	11.19	Upgradation for Infrastructure in existing Estates, Mohali	6

20	11.20	IT/Knowledge Industry Development Fund	7
21	11.21	Data Protection and Consumer Piracy	7
22	11.22	Clearances and Support	7
23	11.23	Allotment /Transfer of Land to PICTCL By State Government	7
24	11.24	Modalities for Implementation of the Policy	7
25	11.25	Amendment in the Definition of IT/BT/Knowledge Based Industry	8

Annexure

I		Categories of Industries include in the scope/definition of Information Technology Industry	11-15
II		Mandatory Specifications (List-I) Desirable Specifications (List-II)	16-18
III		Composition of Vision Group, Core Group and Task Force	19-20

1 Preamble

- 1.1 The Information Technology & Knowledge Industry Policy, 2009 endeavors to delineate a strategy for harnessing the opportunities and the resources offered by the Information Technology and Knowledge Industry for the comprehensive social and economic development of the State.
- 1.2 Punjab has led the country's economy in its growth led endeavor, be it agriculture or industry. It seeks to achieve leadership as a catalyst of India's advancement in the 21st century. This strategy has been conceived keeping in view the fact that IT/knowledge Industry constitutes the primary instrument for facilitating Punjab's emergence as a leading knowledge society in the region. The growth of Punjab in coming years will be increasingly driven by the knowledge and service based sectors, where ease of information transactions will be a key determinant of success. The strategy intends to create an IT/Knowledge industry with exports worth USD 4.6 bn and 0.6 million direct and indirect jobs by 2018.
- 1.3 The primary impetus for growth in knowledge sector has come from private enterprise and community energies. The IT/Knowledge Industry policy accordingly envisages the role of Government as being primarily that of a facilitator for creating an enabling environment where the energies of the private sector and of civil society can be most effectively deployed. The objective of the Government is to put in place a package of policy measures and incentives, which will make Punjab one of the most attractive investment destinations in IT/ Knowledge Industry sector.
- 1.4 The Government of Punjab through Punjab Information Communication and Technology Corporation Ltd. (PICTCL), its nodal agency for the IT/Knowledge Industry investment has prepared a detailed strategy and action plan to promote the IT/Knowledge Industry sector in the State towards achieving socio-economic development of the State. The Strategy aims to create an ecosystem for IT/Knowledge industry by addressing the challenges for the four key components namely Infrastructure, Policy, Human Resources and Investor Relations.
- 1.5 The new IT/Knowledge Industry Policy 2009 is part of the overarching vision and strategy detailing out the key fiscal and non-fiscal incentives for the industry and an aggressive articulation to invite infrastructure developers and large IT units to undertake IT projects in the State.

2. Vision

To use Information Technology and Knowledge Industry as a vehicle for economic development and transform Punjab from a Resource based economy to a Knowledge based economy.

3. Mission

To create an enabling ecosystem for Information Technology and Knowledge Industry by focusing on creation of necessary infrastructure, development of human capital, proactive engagement with Investors and effective policy implementation.

4. Objectives

- 4.1 To establish Punjab as a leading IT/Knowledge Industry destination in the country.
- 4.2 To provide a nurturing and enabling environment conducive to the vibrant growth of the local IT industry in the State.
- 4.3 To aggressively promote the State as the destination of choice for emerging IT business opportunities including IT Enabled Services and other knowledge based industry.
- 4.4 To develop IT/ Knowledge Industry as a strong small and medium enterprise sector in Punjab.
- 4.5 To attract foreign direct investment (FDI), in IT/Knowledge Industry by specially encouraging the MNCs and NRIs to invest in the State.
- 4.6 To provide a conducive environment for the sector by reducing regulations and increasing new opportunities.
- 4.7 To create world class infrastructure for IT/Knowledge Industry and an enabling framework for protection of intellectual property and data.
- 4.8 To create availability of robust manpower and education infrastructure to enhance direct and indirect employment creation in the IT/Knowledge based sector in the State.

5. Strategic Framework and Action Plan

The Government of Punjab has conceptualized a strategic framework and action plan to achieve economic growth through development of nationally and globally competitive industry by providing an ecosystem for facilitating IT/Knowledge Industry investments in the state. The Government intends to focus its incentive policy based on four critical enablers i.e. Infrastructure, Human Resource, Policy and Investor Relations for providing favorable ecosystem for IT investors in attracting investment into the state. The details of the strategic framework and action plan have been published separately.

6. Definitions

- 6.1 IT units refer to companies in the IT hardware, IT software and other Knowledge Industry units such as Biotechnology, Nanotechnology, and Telecommunications etc. IT software industry includes IT software, IT services and IT Enabled Services. A detailed category wise list of industries included in definition of IT industry is indicated in Annexure-I.
- 6.2 A Biotech Company refers to Research and Development and/or non polluting manufacturing of products or processes, which use or are derived by using specific living systems (plants, animals and microbes or parts thereof) and or enzymes/ biocatalysts-derived there from. The company also includes activities such as Genetic engineering or cell culture or microbiology or biochemistry and Bio-informatics.
- 6.3 Telecommunication companies include Basic Telecom Service Providers (fixed), VSAT, Cellular (Mobile) companies, Telecom Infrastructure companies, ISPs and any other value added services licensed by Ministry of Communications & IT, Government of India.
- 6.4 Knowledge Industries refer to those industries which are relatively intensive in their inputs of technology and/or human capital. These include IT/ITES, Nanotechnology, Consulting, Biotechnology, electronics, and telecommunications. This will also include Research and Development services and other specialized institutions.

- 6.5 Institutions offering specialized education & training for IT and Knowledge Industries such as finishing schools, Entrepreneurship Development Cells, Incubation Centers, Institutes of higher learning and other knowledge industries, which are part of an IT Park/Knowledge Park would be eligible for the benefits under this policy at par with IT units.
- 6.6 IT Project refers to investment from infrastructure developers and the IT units/ companies as described in Annexure.
- 6.7 Infrastructure developers or builders refer to real estate infrastructure companies constructing built up space for sale/ lease/ or sale cum lease to the IT/knowledge industries.
- 6.8 SMEs: Small & Medium Enterprises are IT units with a fixed capital investment of upto Rs. 10 crores.
- 6.9 Mega IT Projects for developers refers to projects with fixed capital investment of Rs. 50 crore and with a minimum area requirement of 10 acres.
- 6.10 Mega IT Projects for units refers to projects with fixed capital investment of Rs. 25 crore.
- 6.11 IT Parks are defined as follows:
 - a. IT Parks providing built up space to IT/Knowledge Industry.
 - b. Integrated IT Parks providing built up space and plotted infrastructure for IT units/companies as well as necessary support infrastructure in terms of residential, commercial, recreational and other facilities.

7. Exemption from Clearance from Pollution Control Board

IT and other knowledge units notified by PICTCL will be exempt from the purview of the Punjab Pollution Control Board (PPCB) on compliance of basic minimum norms/standards defined by PPCB for green industries.

8. Exemption from Inspection under Various Labour Laws

- 8.1 IT units will be exempted from inspections under the following Acts and the Rules framed there under, barring inspections arising out of specific complaints. IT units are permitted to file self-certificates, in the prescribed formats.
 - i. The Factories Act, 1948
 - ii. The Employment Exchange (Notification of Vacancies Act), 1961
 - iii. The Punjab Shops and Commercial Establishment, 1958
 - iv. The Contract Labour (Regulation & Abolition) Act, 1970
 - v. The Payment of Wages Act, 1936
 - vi. The Minimum Wages Act, 1948
 - vii. The Employment Exchanges Act, 1959
- 8.2 All IT units have general permission for three shift operations with women allowed to work in the night shift for IT Industry, provided adequate measures have been taken to ensure safety of the women employees.

9. Exemptions from Punjab Apartment and Property Regulation Act (PAPRA)

IT/Knowledge Industry Parks shall be exempted from the Punjab Apartment and Property Regulation Act (PAPRA) 1995, in accordance with the power vested with the state government under Section 44 (2) of the Act.

10. Incentives in respect of Electric Power

- 10.1 Power would be available to IT units/knowledge industrial units at industrial tariff irrespective of their location/zoning.
- 10.2 The power connections provided to the IT units/parks would be given priority both in sanctioning and servicing.
- 10.3 The captive power generation facility installed by IT units will be eligible for 100% exemption from payment of electricity duty for captive power generation.
- 10.4 IT units/Knowledge industrial units would be entitled for 100% exemption from electricity duty for 5 years from the date of release of connection from PSEB.
- 10.5 IT Parks notified by PICTCL will be exempted from the purview of statutory power cuts, restriction of peak load hours and weekly off power cut towards provision for uninterrupted power supply.
- 10.6 IT units authorized by PICTCL will be exempted from purview of restriction of peak load hours and weekly off power cut towards provisions for uninterrupted power supply.
- 10.7 IT units/parks would be charged based on the actual units consumed and not on the connected load.

11. Provisions of VAT

VAT on all IT products rationalized to be at par with minimum floor rate of 4%.

12. Exemption from Stamp Duty and Registration Fee

No stamp duty and registration fee will be levied in respect of land allotted by PICTCL to the IT Parks/units:

- 12.1 100% exemption of stamp duty and registration fee for units on the purchase/lease of built up office space within the constructed IT Park. This concession would be available only for the first transaction, when the first sale by the infrastructure company is made to a unit.
- 12.2 100% reimbursement from stamp duty and registration fee on land directly acquired by the developers for construction of IT Parks or IT units/ company to develop their own campuses only after IT Park is duly notified by PICTCL.

13. Permissible FAR

IT Units/Parks will have permissible FAR of 300% on gross area of the project.

14. Exemptions from Zoning Regulations & Conversion Charges

14.1 IT Units

- i. IT units are exempted from land use zoning regulations and can be set up in any of the following notified land uses in the Master Plan /Zonal Development Plan:
 - Residential use zone
 - Commercial use zone
 - Institutional use zone
 - Industrial use zone
 - Conservation / Agricultural use zone
- ii. No conversion or change of land use charges would be levied
- iii. The IT unit has to be notified by PICTCL to avail of the above benefits.

14.2 IT Parks providing Built Up Space

- i. IT Parks are exempted from land use zoning regulations and can be set up in any of the following notified land uses in the Master Plan /Zonal Development Plan:
 - Commercial use zone
 - Institutional use zone
 - Industrial use zone
 - Conservation / Agricultural use zone
- ii. IT Park/unit has to be notified by PICTCL to avail the exemption from conversion charges and zoning regulations.
- iii. There shall not be any conversion charges.
- iv. The minimum built up space for the IT Park/unit for utilizing the above exemption shall be 100,000 sq. ft.

14.3 Integrated IT Parks:

- i. Integrated IT Parks will have to be set up on minimum area of 25 acres and will be exempted from land zoning regulations.
- ii. Integrated IT Parks will have to use minimum 50% area as processing area e.g. providing space for IT industry and the balance for providing necessary support infrastructure e.g. residential, retail, recreational etc. as per approved plan.
- iii. No conversion or change in land use (CLU) charges would be levied on any component of the Integrated IT Park.
- iv. No External Development Charges (EDC) will be levied for Integrated IT Parks.

14.4 IT Units/Parks will require to abide by the norms of parking standards, width of road etc. while availing of exemption from land use zoning regulations.

14.5 The IT Parks shall provide the amenities / infrastructure specified in List I on mandatory basis and those specified in List II as desirable amenities to suit the needs of IT Industry in Annexure- II.

- 14.6 The developers shall furnish an undertaking to the Local Authority that the built space shall be sold / leased / rented only to IT Units as recognized under this policy and if any IT Unit vacates, the same will be informed to PICTCL and subsequent lease etc., will be given only to the units recognized under this policy.
- 14.7 The local authority shall obtain a bank guarantee for an amount equal to twice the conversion charges in case of an IT Park. The premises will be inspected on completion by PICTCL for ensuring compliance with the above stipulations before advising the Local Authority for discharge of Bank Guarantee.

15. Special Incentives for Mega Projects

Government may consider special package of incentives for all Mega Projects on a case to case basis based on the gestation period of projects, pioneering nature of projects, Locational aspects, state of the art technology, profitability, scope for further related investment etc. Empowered Committee under the Chief Minister shall be competent to approve the special package of incentives and modalities for the same.

16. Special Incentives for Small and Medium Enterprise (SMEs)

Capital subsidy @20% of fixed capital investment in a project, subject to ceiling of Rs.20 lacs, to be available to first 10 approved SME units in the IT Parks notified by PICTCL.

17. Incentive for Quality Certifications

The Government will reimburse 20% of expenditure incurred by the IT software company for obtaining quality certifications for SEI CMM (Software Engineering Institute – Capability Maturity Model) Level 2 upwards, subject to maximum ceiling of Rs. 4 lakhs. Similar reimbursement will be made for ITES Companies for achieving COPC (Customer Operation Performance Centre) and eSCM (eSourcing Capability Model) certification. The IT/ITES units/ companies can claim this incentive only once.

18. Venture Fund for IT/ Knowledge Industry

Punjab Venture Capital Fund has been created by Government of Punjab with a corpus of Rs. 20 crore contributed by SIDBI and various state corporations. The fund has already mobilized contributions to the tune of Rs. 5 crore and the management of the fund is going to be entrusted to private partner. The State Government will contribute an additional sum of Rs. 5 crores to the corpus.

19. Upgradation of Infrastructure in Existing Estates, Mohali

- 19.1 The existing estates in Mohali were developed during the year 1980-81 for setting up of Electronic Industries and there is need to upgrade the infrastructure in these estates by allowing development of world class IT campus/ complexes to fulfill the requirements of IT/ Knowledge Industry.

- 19.2 PICTCL will work out modalities in agreement with all the stakeholders to enable the developers/IT Units to develop IT Park/ IT campuses/IT built up space in the existing estates in Mohali by rezoning of existing layouts and other development controls.

20. IT / Knowledge Industry Development Fund

- 20.1 The State Government will set up a development fund contributed by government agencies including PIDB and OUVGL Scheme for promotion of IT/Knowledge Industry.
- 20.2 The fund shall be utilized to promote IT/Knowledge Industry for creation of Infrastructure, Human Resource Development, Policy implementation and building strong Investor Relations. The fund shall also provide an additional assistance for advancement of SMEs.
- 20.3 The core group under the Chairmanship of Chief Secretary will approve the expenditure from the development fund.

21. Data Protection and Consumer Privacy

State Government would incorporate necessary regulation on Data Protection and Consumer Privacy to reassure the IT/TeS companies and their client of the safety of their data and indicate the State Government's commitment to data protection and consumer privacy. Action will be taken to protect the Data and consumer privacy through state policies and recommendation for enactment of suitable laws.

22. Clearances and Support

PICTCL shall act as nodal agency for facilitating investments and land allotment for the IT/ Knowledge industry and shall provide single window services to such investors. All statutory clearances to IT Parks/units on lands allocated by PICTCL would be given by PICTCL except the clearances from Fire Services, Airport Authority etc.

23. Allotment/transfer of Land to PICTCL By State Government

State Government will prioritize the allotment/transfer of available land with various government departments/agencies to PICTCL to develop IT/Knowledge Industry infrastructure by identifying key IT complexes/Parks in the state.

24. Modalities for Implementation of the Policy

- 24.1 The detailed schemes may be framed, wherever required, to give effect to the provisions of this policy.

- 24.2 For an effective implementation and facilitation of Policy, following committees/ expert groups are being formed by the Government of Punjab:
- i. Formation of Vision Group under the Chairmanship of Chief Minister and comprising of key decision makers from the government and representatives of industry.
 - ii. Formation of Core Group and Task Forces under the Chairmanship of Chief Secretary and comprising of key decision makers from Government and Industry representatives.
 - iii. The composition of Vision Group, Core Group and Task Forces is defined in Annexure III.

25. Amendment in the Definition of IT/BT/Knowledge based Industry

The Core Group under the Chairmanship of Chief Secretary will decide regarding amendment in the definition as may be required from time to time.

Annexure



Annexure – I

[Clause 6(i)]

A. Categories of Industries include in the scope/ definition of Information Technology Industry:

1. Computing devices including:

- 1.1 Desktop/Personal computer
- 1.2 Thin/Thick clients
- 1.3 Server
- 1.4 Workstation
- 1.5 Nodes
- 1.6 Terminals
- 1.7 Network PC
- 1.8 Home PC
- 1.9 Laptop computers
- 1.10 Notebook computers
- 1.11 Palm to computer/ PDA
- 1.12 Hand held computer devices

2. Network controller cards /memories including:

- 2.1 Network interface card (NIC)
- 2.2 Adapter-Ethernet/PCI/EISA/Combo/PCMCIA
- 2.3 SIMMs-memory
- 2.4 Central processing unit (CPU)
- 2.5 Controller-SCSI/Array
- 2.6 Processors-Processor/Processor power module/upgrade
- 2.7 Smart card devices

3. Storage units including:

- 3.1 Hard-disk drivers/Hard drives
- 3.2 RAID devices & their controllers
- 3.3 Floppy disk drives
- 3.4 CD-ROM drives
- 3.5 Tape drives-DLT devices/DAT

- 3.6 Optical Disk drives
- 3.7 Other digital storage devices including magnetic tapes & DATs

4. Others:

- 4.1 Keyboard
- 4.2 Monitor
- 4.3 Mouse
- 4.4 Multimedia kits
- 4.5 Scanners
- 4.6 Joystick
- 4.7 Card readers
- 4.8 Computerized time recording devices
- 4.9 Tablets

5. Printers and output devices including:

- 5.1 Computer Printers of all types

6. Networking products including:

- 6.1 Hubs
- 6.2 Routers
- 6.3 Switches for networking
- 6.4 Computer network concentrators
- 6.5 Trans-receivers

7. Software including:

- 7.1 Application software
- 7.2 Operating system
- 7.3 Middleware/Firmware
- 7.4 Any component level development of the above software
- 7.5 Design and Quality assurance work for this software
- 7.6 System integration work/components for software
- 7.7 Any localization and SCM work in the software
- 7.8 Extension development (modules outside the main software)

8. Power supplied to computer systems including:

- 8.1 Switch mode power supplies
- 8.2 Uninterrupted power supplies

9. Networking / Cabling & related accessories (related to IT Industry):

- 9.1 Fiber optic cable
- 9.2 CAT 3, CAT 5 & CAT 6 & other network specific Cable
- 9.3 Connectors, terminal blocks
- 9.4 Jack panels, patch cord
- 9.5 Mounting cord, patch panels
- 9.6 Back boards, wiring blocks
- 9.7 Surface mount boxes

10. Consumables including:

- 10.1 CD-ROM/Compact disk
- 10.2 Floppy disk for computer
- 10.3 Tapes DAT/DLT for computer
- 10.4 Ribbons for computer
- 10.5 Toners
- 10.6 Inkjet cartridges for computer printers
- 10.7 Inks for computer output devices
- 10.8 Continuous Computer Forms

11. Electronic Components:

- 11.1 Printed circuit board assembly / populated PCB relating to computer integrated circuits/ICs & connectors for computers
- 11.2 Magnetic heads, Print heads

12. Tele-communication equipments including:

- 12.1 Videophones
- 12.2 Multiplexers/Muxes
- 12.3 Modems
- 12.4 VSAT
- 12.5 Computer communication equipments
- 12.6 Wireless datacom equipment – Including Set top boxes for both video and digital Signaling
- 12.7 Receiving equipment like Pagers, Mobile Cellular Phones etc.

13. Information Technology services:

- 13.1 Internet Service Provider
- 13.2 E-mail Service Provider
- 13.3 World wide web Service Provider
- 13.4 E-commerce & content development
- 13.5 Electronic Data Interchange (EDI) Services
- 13.6 Video conferencing
- 13.7 V-SAT, ISDN services
- 13.8 Electronic Data Centre activities

14. IT Enabled Services: ITeS include processes and services sourced from a place that is located in a 37 place separate from that in which the end users are located. It is delivered over private and secure public telecommunication networks. These services can be sourced from external contractors, own subsidiary or joint ventures.

15. ITeS include, but are not limited to:

- 15.1 Customer interaction services, e.g., call/contact centers and email help desks
- 15.2 Engineering and design
- 15.3 Back office processing
- 15.4 Finance and accounting (provided remotely)
- 15.5 Insurance claims processing (provided remotely)
- 15.6 HR services (provided remotely)
- 15.7 Web site development and maintenance services
- 15.8 Data search, integration and analysis
- 15.9 Network consulting and management
- 15.10 Remote education
- 15.11 Animation (provided remotely)
- 15.12 Market research (provided remotely)
- 15.13 Translation, transcription and localization (provided remotely).
- 15.14 Consultancy (Provided remotely) for:
 - IT sector
 - ERP
 - CRM
 - MRM
 - Technical support
 - Business Systems & Processes Data Processing

- 15.15 Data Processing
- 15.16 System Integration and customization
- 15.17 System Up gradation services
- 15.18 Designing and designing systems
- 15.19 Call Centers:
 - Voice- Both inbound and outbound
 - Data- Both inbound and outbound
 - Software Extension development
 - IT Facilities management (including provided remotely)

16. Biotechnology:

- 16.1 Genetic Engineering
- 16.2 Cell Culture
- 16.3 Microbiology
- 16.5 Biochemistry
- 16.5 Bio Informatics

17. Knowledge Industry include:

- 17.1 IT and IT Enabled Services
- 17.2 Nanotechnology
- 17.4 Biotechnology
- 17.5 Telecommunications
- 17.6 Consulting Agencies
- 17.7 Research and Development Services

ANNEXURE – II

[Clause 14.5]

List – I

Mandatory Specifications

- 1. Legal Clarity:**
 - 1.1 Clear & Unencumbered Title
 - 1.2 Undertaking to obtain Building Occupancy Certificate within three months of completion of construction
- 2. Large Floor Plates:**
 - 2.1 Min. Size: 10,000 sq. ft. /Floor (Optimum size: 20,000 – 30,000 sq.ft. / floor)
 - 2.2 Efficiency: Min. – 75% (Optimum over 80%), with a transparent and lucid definition of changeable and net lettable areas
- 3. Comfortable Floor –to– Ceiling Heights:**
 - 3.1 7'.0" - 7'.6" Clear Height below False Ceiling OR
 - 3.2 Min. 9'.6" Clear Height below Beams / Slab
- 4. Power & Power-back-up:**
 - 4.1 A minimum of 0.6 KW/1000 sq. ft. of Power is required (Optimum level would be between 0.8 – 1.0 KW/1000 sq.ft.)
 - 4.2 On site Power Back-up of a minimum 100 % must be provided (Diesel Generators, etc,) to support office equipment, lighting and 50% for air conditioning
 - 4.3 Additional power Back-up for Emergency Lighting & Critical Facilities to be provided.
- 5. Air-conditioning:**
 - 5.1 Central Air-Conditioning Provided OR
 - 5.2 Provisions Made (AC Ducts, AHU Rooms)
- 6. Telecommunication Infrastructure:**
 - 6.1 Provision for False Flooring and Structured Cabling in the Building
 - 6.2 Availability of Adequate Telephone lines (For Example – In-house Telephone Exchange (EPABX)
 - 6.3 Optic Fibre Connectivity (Local Loop Network)
 - 6.4 Accessibility to the VSNL Earth Station
 - 6.5 STPI Link / Space for installation of Dish Antenna / Microwave Tower
- 7. Concealed Cabling:**
 - 7.1 Provision for concealed ducting for Power, Telecom and Data Cables in each hall in the Building

8. Parking:

- 8.1 Minimum of one Car Park / 750 sq. ft. of Super Built area
- 8.2 Adequate parking accommodation for Two Wheelers @ 1 Two Wheeler / 300 sq. ft. of Super Built Area

9. Security & Access Control:

- 9.1 Central Security Measures like 24 Hrs Security
- 9.2 Provision for Access Control Systems to be installed as required by Tenant Companies

10. Fire-protection Measures – As Per Nbc (national Building Code):

- 10.1 Integrated Fire Alarm System
- 10.2 Fire Sprinkler System
- 10.3 Required number of staircases as per the National Fire Prevention Code

List – II

Desirable Specifications

1. Parking:

- 1.1 Adequate Parking for Buses (if required due to peripheral location)
- 1.2 Adequate provision for future expansion (including multi-level parking areas)

2. Security & Access Control:

- 2.1 CCTV, Public Address System

3. Fire-protection Measures – As Per NBC (National Building Code):

- 3.1 Emergency Fire Trenches

4. Property & Facilities Management:

- 4.1 Quality Service Provided by a Reputed Service Firm

5. Round The Clock Operation of All Facilities And Amenities:

6. Other Amenities:

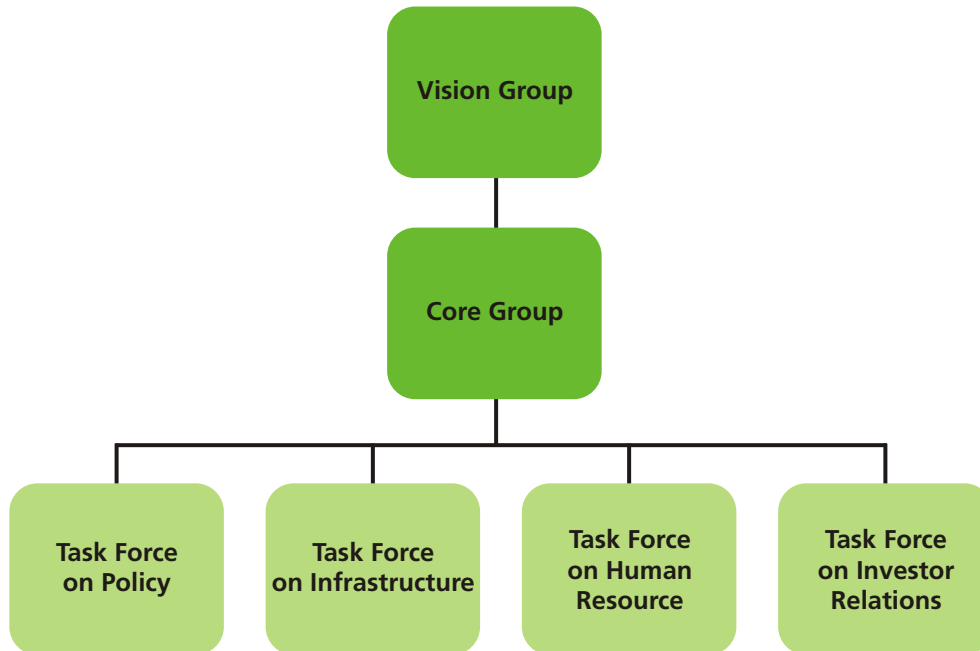
(Recommended maximum space to be used 20% of built up area)

- 6.1 Transport facilities to be provided in terms of shuttle buses that ply between the various key points in the city to the Tech Park at regular intervals
- 6.2 Food Court, Café and Restaurant
- 6.3 Health Club equipped with an aerobics studio, games area, karaoke lounge, Jacuzzi and massage facilities and jogging trail
- 6.4 Medical Centre to be provided with treatment for minor ailments and diagnostic services
- 6.5 Banking & Foreign Exchange Facilities to be made available to tenants in the form of fully functional branches & ATM facilities if not existing within half a kilometer
- 6.6 Freight and Courier Services
- 6.7 Business Centre including suites, independent cabins, Conference Rooms, Discussion Rooms that offer the following facilities:
 - Fax Machine
 - Secretarial Services
 - Courier Services
 - Photocopying
 - Car Rentals
 - Hotel / Airline Booking
 - PCs, Printer, mobile telephone on rental
- 6.8 Desirable Infrastructure for Large Technology Parks (Over 10, 00,000 sq.ft.):
 - Telecom Connectivity from Alternative Exchanges / Service Providers
 - Power from Alternate Grids
 - Residential, Retail & Entertainment Components

ANNEXURE - III

[Clause No. 11.24 (ii) (C)]

Composition of Vision Group, Core Group and Task Force



1. Vision Group will be under the Chairmanship of Chief Minister and representatives of Industry Associations comprising of:
 - 1.1 Chief Minister
 - 1.2 Minister, Industries and Commerce
 - 1.3 Minister, Finance & Planning
 - 1.4 Minister, Information Technology
 - 1.5 Chief Secretary
 - 1.6 Principal Secretary, Department of Industries and Commerce
 - 1.7 Secretary, Housing & Urban Development
 - 1.8 Principal Secretary, Technical Education/Higher Education
 - 1.9 Managing Director, PICTCL
 - 1.10 Representatives from Industry and Industry Associations
2. Core Group will be under the Chairmanship of Chief Secretary comprising senior officials across departments and members from Government in the Vision Group
3. Task Forces will be constituted within the Core Group and will be under the chairmanship of Chief Secretary comprising senior officials across departments and members from Government in the Vision Group

3.1 Task Force for Infrastructure:

- Principal Secretary, Industries and Commerce
- Principal Secretary, Finance
- Secretary, Housing & Urban Development
- Secretary, Local Government
- Secretary, Power
- Managing Director, PIDB
- Managing Director, PSIEC
- CA, GMADA
- Chief Town Planner, Punjab
- Managing Director, PICTCL
- Representatives of Industry

3.2 Task Force for Policy Implementation:

- Principal Secretary, Industries and Commerce
- Secretary, Department of Finance
- Secretary, Housing & Urban Development
- Secretary, Local Government
- Secretary- Department of Science and Technology
- Secretary, Department of Power
- Secretary, Department of Labour
- Chairman, PSEB
- Managing Director, PSIEC
- Managing Director, PICTCL
- Representatives of Industry

3.3 Task Force for Human Resource:

- Principal Secretary, Department of Technical Educational and Industrial Training
- Principal Secretary, Department of Industries and Commerce
- Secretary, Department of Higher Education
- Secretary, Department of Employment Generation & Training
- Vice Chancellors of Key Universities
- Managing Director, PICTCL
- Representatives from the Industry

3.4 Task Force for Investor Relations and Promotion:

- Principal Secretary, Industries and Commerce
- Secretary, Housing & Urban Development
- Secretary, Department of Public Relations
- Secretary, Department of Tourism
- Managing Director, PIDB
- Director, STPI
- Managing Director, PICTCL
- Representatives from the Industry



